



**CONTINUED**

Mouthhooks may be present or absent, & the head capsule exposed or retracted.



YES

Is the head capsule somewhat hardened & antennae well developed? The head capsule maybe retracted.

NO

YES

Do short lobes surround the spiracular disc?

NO

Is the respiratory tube long & thin, &  $\geq$  to the body length?

NO

NO

YES

Is the head capsule exposed, the body flattened & leathery with a posterior rosette of hairs?

YES

NO

NO

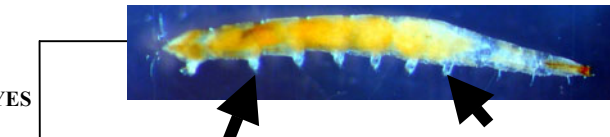
NO

YES

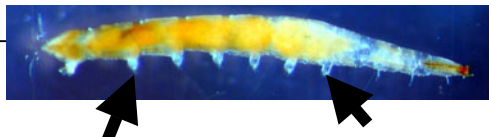
Do fleshy pseudopods circle the body, & is the head capsule retracted, & the antennae well developed

NO

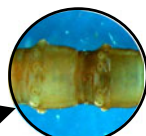
posterior rosette of hairs



**Stratiomyidae**  
MCI = 5



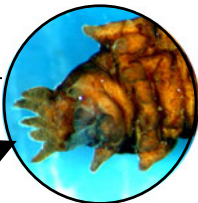
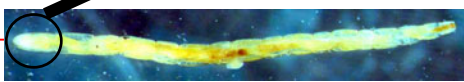
**Empididae**  
MCI = 3



**Tabanidae**  
MCI = 3



**Pelecorhynchidae**  
MCI = 9



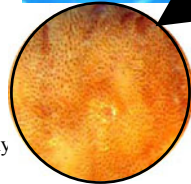
**Sciomyzidae**  
MCI = 3



**Syphridae**  
MCI = 1



**Ephyridae**  
MCI = 4



**Muscidae**  
MCI = 3

