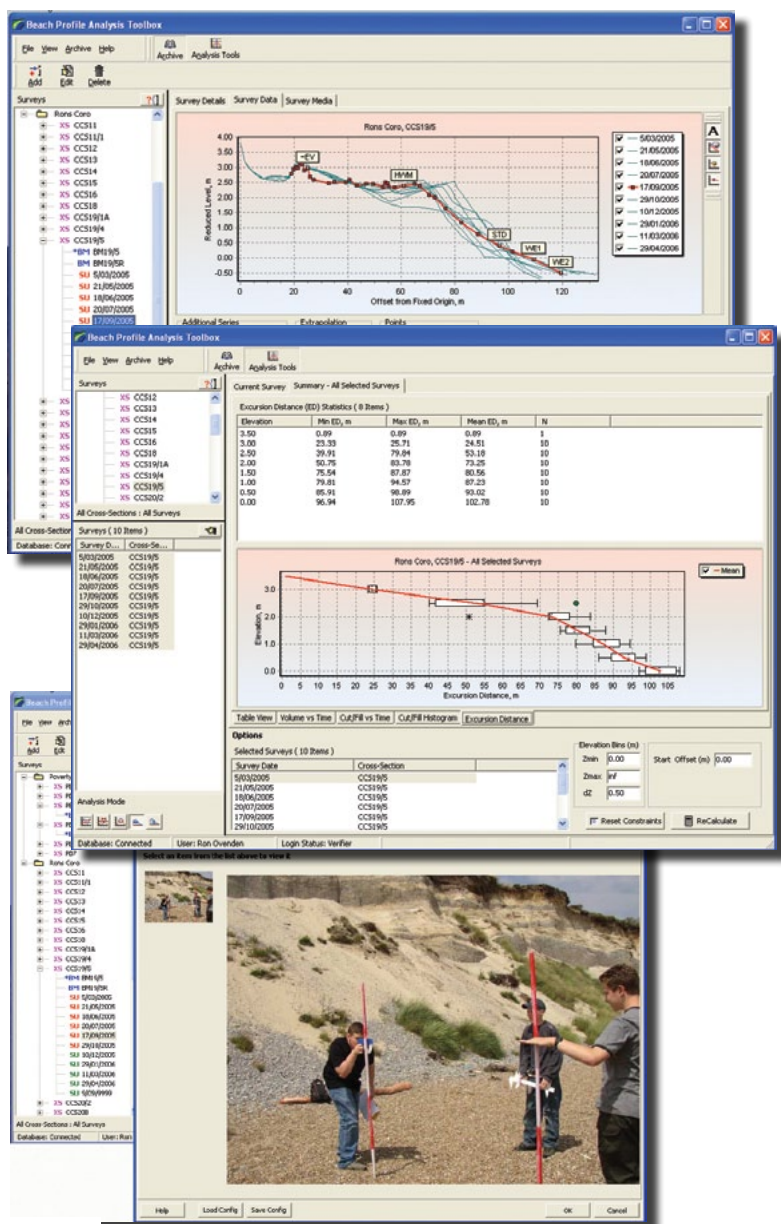


# BPAT

## Beach Profile Analysis Toolbox

NIWA's Beach Profile Analysis Toolbox **BPAT** has been developed to provide an easy to use, integrated package for the input, quality checking, analysis and archiving of beach profile related datasets. The toolbox has been specifically developed to meet the needs of professionals and researchers involved with coastal hazard management, engineering and science applications, to better understand variability and trends in beach and nearshore profile data.



### BPAT Features

- Multiple data entry methods.
- Streamlined migration and importing of profile datasets from spreadsheets and other commonly used profile analysis software.
- Graphical data quality checking and manipulation routines.
- Storage of benchmark history and survey details, including digital image storage.
- Customisable parameters for data analysis.
- A range of commonly used profile analyses, including volume change, cut/fill changes and histograms, excursion distance changes.
- Customisable data viewing and plotting functionality.
- Data export to other beach profile analysis packages, spreadsheets, plotting programmes and Geographical Information Systems.

### The BPAT package

- A licenced version of the software
- A pdf user and help manual
- On-line help
- A demo database
- Sample input/output files in a range of data formats

For more information and pricing please contact:  
 Jeremy Walsh, NIWA, PO Box 8602, Christchurch, New Zealand.  
 Tel: +64 (0) 3 343 7877  
 Fax: +64 (0) 3 348 5548  
 Email: bpat@niwa.co.nz