

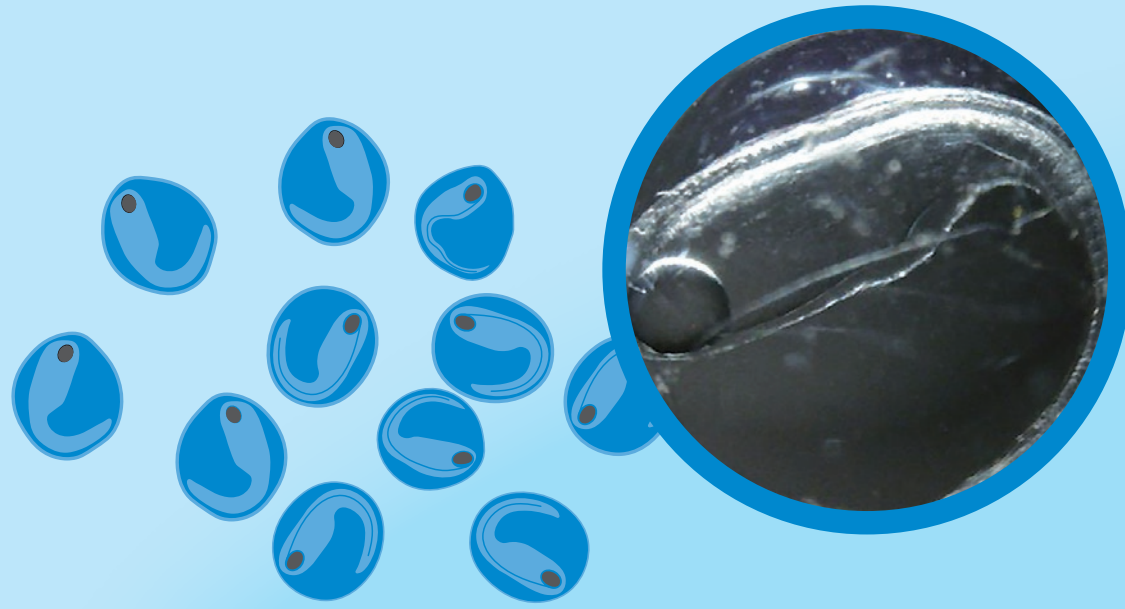
TUNA: he aha ngā kōrero pūtaiao e pā ana ki ngā tuna o Aotearoa?

Ko te tuna te tino ika i ngā wai Māori kua pāraweranui whānuitia ki Aotearoa. He whanokē anō hoki te mataora o te tuna, nā tā rātou haerenga ki te moana, ki ngā pūhatanga me ngā wai Māori.



1 NGĀ HUA 🌊

Ka tīmata te oranga o te tuna hei hēki i Te Moana-nui-ā-Kiwa.



2 TORONGŪ 🌊

Ka pao ngā hua, ka puta ko ngā torongū pūataata. Ka pōteretere ngā torongū i ngā ia o te moana mō ngā marama e 9 ki te 12, tae noa mai ki Aotearoa.



3 TUNA PŪATAATA 🌊

I te taenga mai o ngā torongū ki te paenga paparahi tata ki Aotearoa, ka tīmata ngā torongū te panoni hei tuna pūataata, āhua 60–70mm te roa. Hei te wā kōanga, ka okioki ngā tuna pūataata ki rō pūwaha, kia waia haere ki te wai Māori.



6 TUNA HEKE 🌊

Kua kī pai te puku o te tuna heke, ā, horekau he take mō te kai! Kua hiriwa hoki te kiri o te tuna heke. I ngā pō hāuaua o te ngahuru (me te kōanga, i ētahi wā) ka hoki ngā tuna heke ki Te Moana-nui-ā-Kiwa, ki reira paratau ai. E whakapono ana koia nei te wāhi mate ai te tuna.



5 TUNA 🌊

Ka noho ngā tuna ki ngā awa, ngā roto, ngā rohe kōreporepo me ngā puna mō ngā tau 11 ki te 52. Ka kaha kai ngā tuna kia pai ai te whakarite mō te hokinga atu ki te moana.

Kikī ana ngā puku o ngā tuna i te ngāngara, te ngata, te kōura me ngā ika nohinohi. Ka waipuke ana, ka kai hoki ngā tuna i te noke, te weta me te tātaka.



4 TUNA RIKI 🌊

Tāria te wā, ka parauri haere te kiri, ā, ka tere atu ngā tuna riki ki ngā awa, ngā roto, me ngā puna wai Māori. Tirohia ngā arawai hei te wā raumati, tērā pea ka kite koe i ngā tuna riki e rere ana.



E TORU NGĀ MOMO TUNA I AOTEAROA

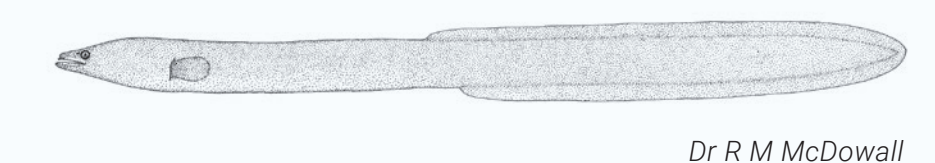


Dr R M McDowall

Tuna Hikuroa (*Anguilla dieffenbachii*)

He rerekē te roa o ngā hiku e rua o te tuna hikuroa. Ka kitea ngā kūreherehe maha i te pikonga o te tinana hoki.

(He ingoa anō: Kūwharuwharu, Reherehe, Kirirua, Ōrea, Arokehe, Ngoingoiwaha)

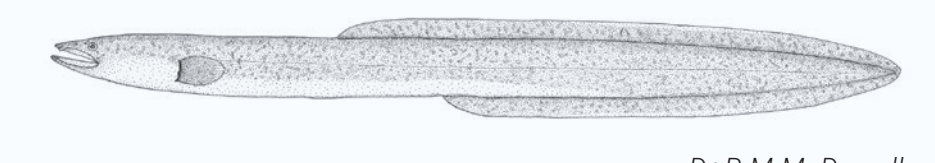


Dr R M McDowall

Tuna Hikumutu (*Anguilla australis*)

He āhua rite te roa o ngā hiku e rua o te tuna hikumutu.

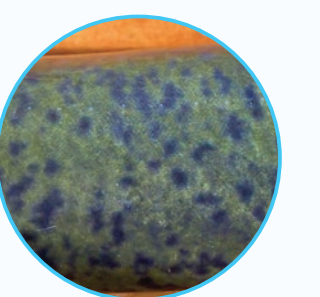
(He ingoa anō: Matamoe, Hao, Aopori, Takotowhenua, Tuna hinahina, Papakura)



Dr R M McDowall

Tuna Hikuroa nō Ahitereiria (*Anguilla reinhardtii*)

He rerekē te roa o ngā hiku pērā i te tuna hikuroa. He kōpurepure pango kei te tinana o te tuna hikuroa nō Ahitereiria.



Tirohia te whārangi ipurangi
niwa.co.nz/te-kuwaha/tuna

NOHOANGA | 🌊 Waitai | 💧 Wai Māori

