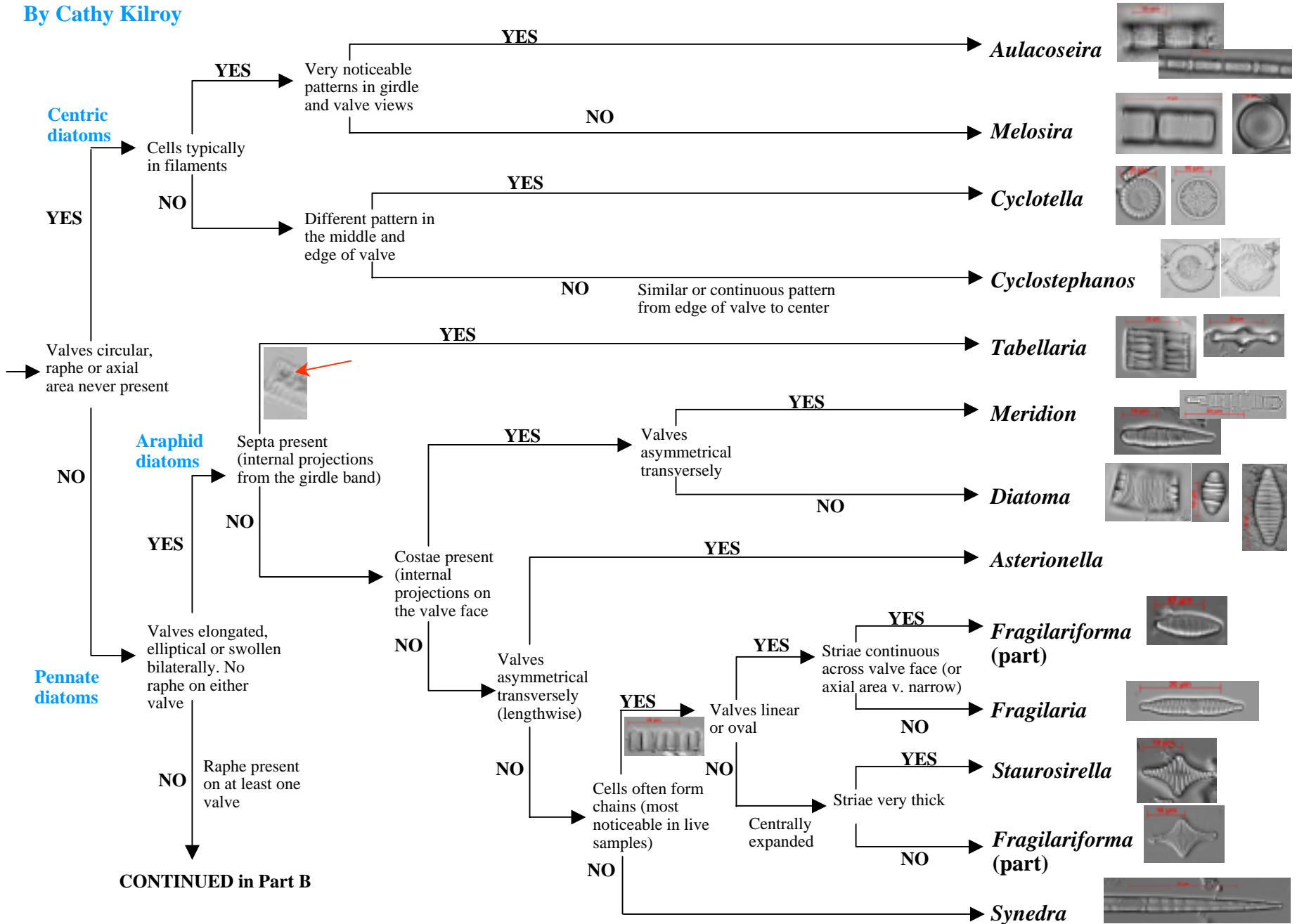
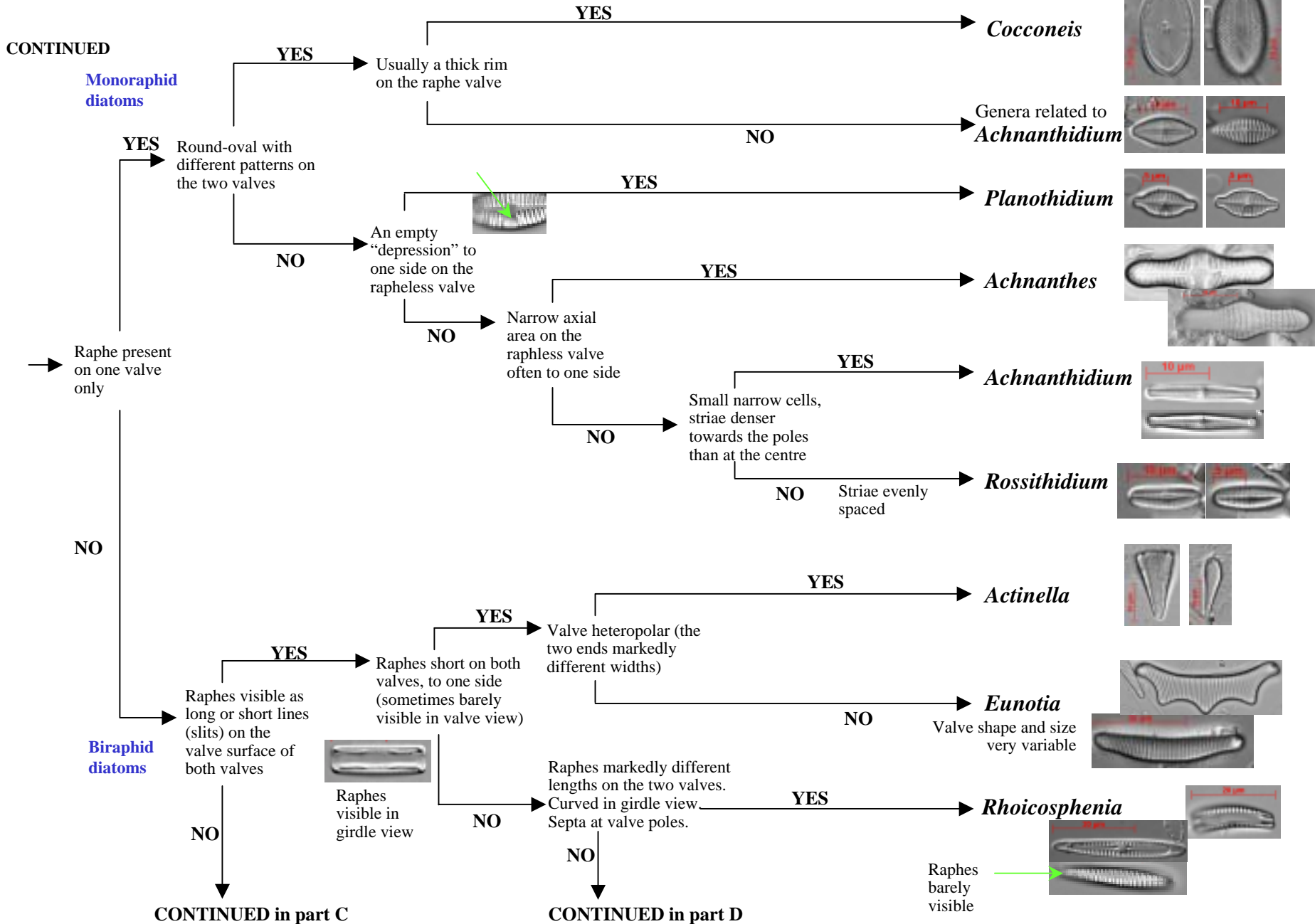


Quick Guide to Common Diatom Genera in Freshwaters

By Cathy Kilroy

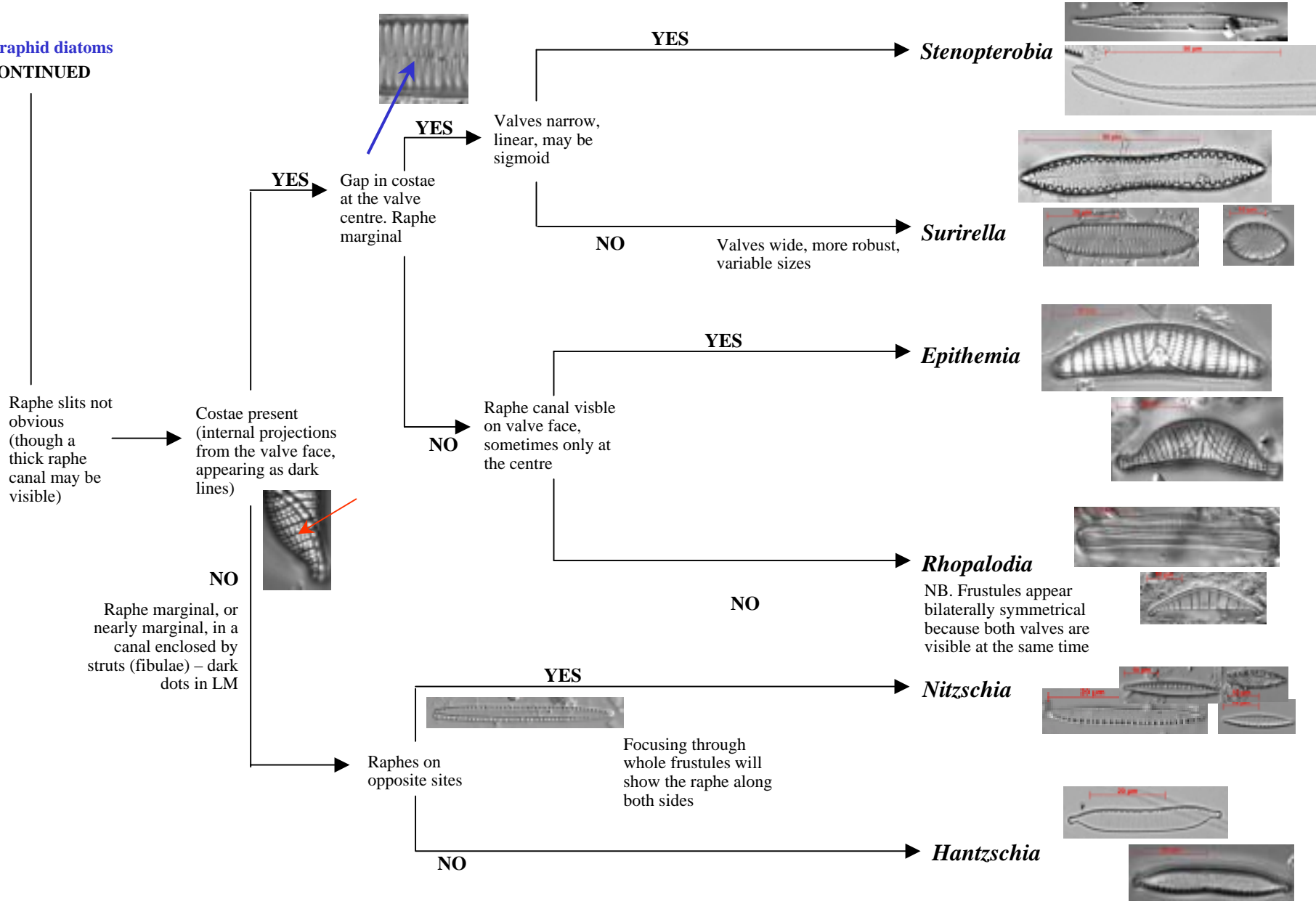


Part B



Part C

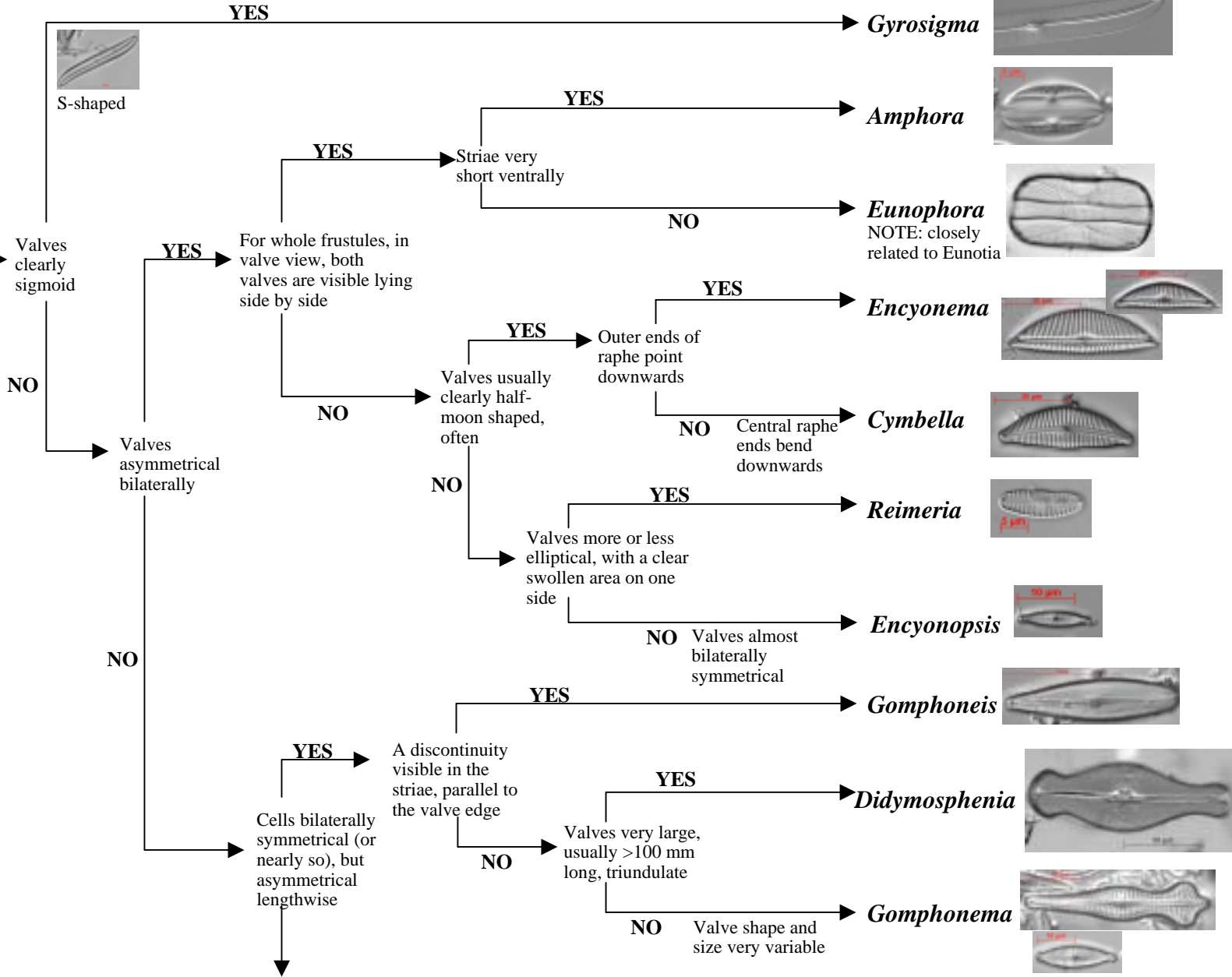
Biraphid diatoms
CONTINUED



Part D

Biraphid diatoms CONTINUED

Raphes long on both valves, ends usually close together at the centre of the valve

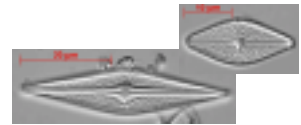
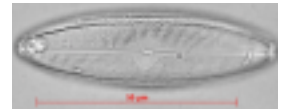
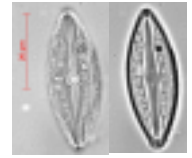
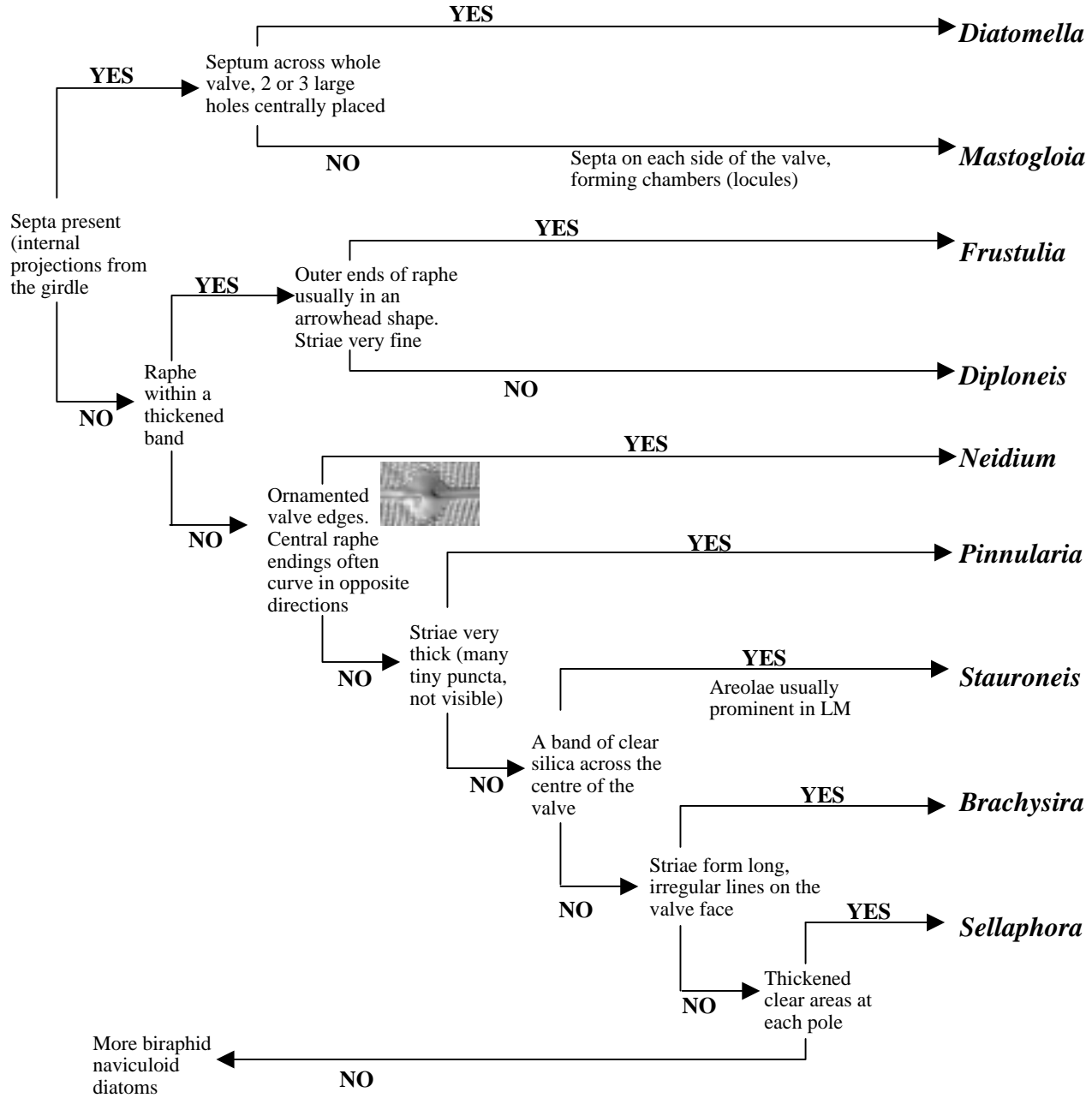


CONTINUED in part E

Part E

Biraphid diatoms CONTINUED

Valves
bilaterally
symmetrical



More biraphid
naviculoid
diatoms

Part F

Biraphid diatoms

CONTINUED

Raphes long, usually almost meeting at the centre of the valve

