

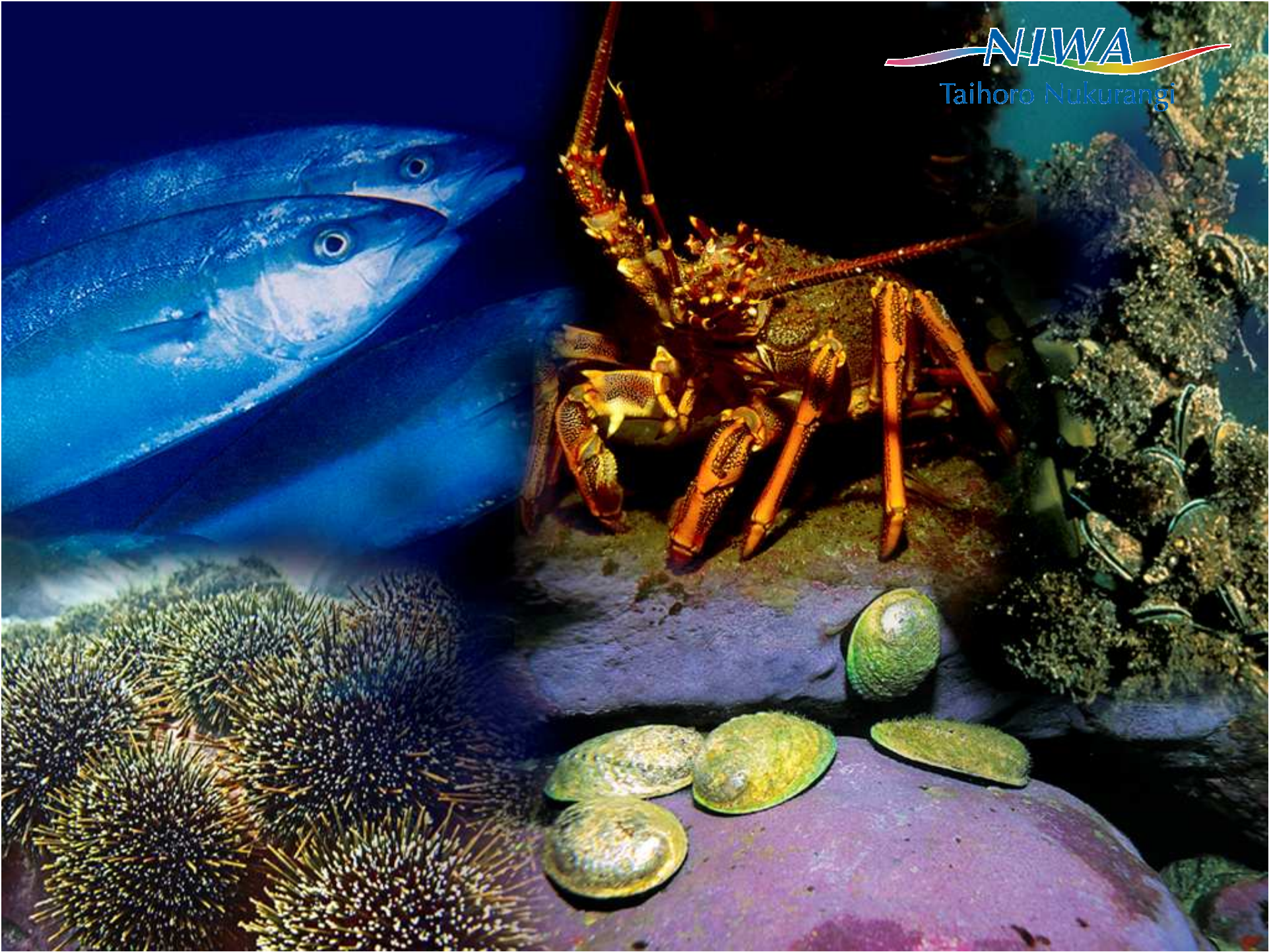
Information to support Mātaitai reserve management

Kelly May

22 June 2007

NIWA

Taihoru Nukurangi





Customary Research Investment

Where have we been?

- Partners
- Foundation of Research Science & Technology (FRST)
- 2004 Taonga Species Objective Based Investment (10 yrs) **X**
 - to support fundamental obligations to Māori under the Treaty of Waitangi (Fisheries Claim) Settlement Act 1992 access to, and use of taonga species
- 2005 Taonga Species Project (4 yrs) **X**
- 2005 Taonga Species Transition (4 years)
 - focus on freshwater research
- Good stories, Mahia, NIWA bottom line investment



Where are we now?

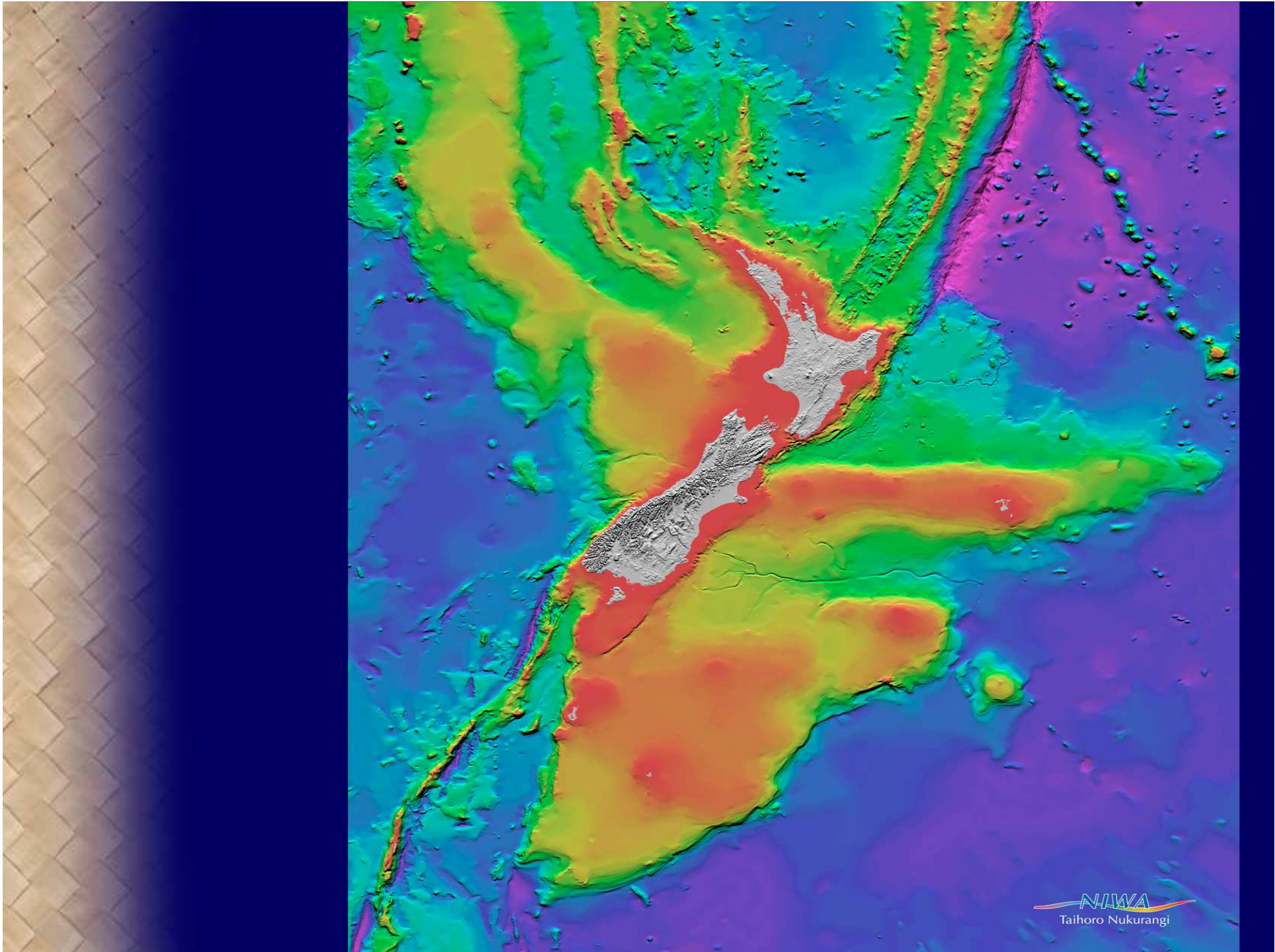
2006 Te Tipu o Te Wananga Portfolio
2007 successful funding decision

“Mātauranga Māori and sustainable management of NZ fisheries”

Vision Mātauranga, Target Outcome 1, *“to develop research capability that will contribute to unlocking the innovation potential of Māori knowledge, people and resources”*

Theme 2, *“Kaitiakitanga and Environmental Protection.”*

- to support fundamental obligations to Māori under the Treaty of Waitangi (Fisheries Claim) Settlement Act 1992
- better provision for Māori non-commercial customary fishing rights & interests
- Māori customary participation in the management of NZ's fisheries






Why is this?

- Ease of access to taonga species
- Fishing pressure & anthropogenic effects (i.e. sedimentation)
- Biological & ecological variability
- Lack of fisheries specific & ecosystem information
- Little or no customary fisheries monitoring
- Erosion of empowerment and rights & concurrent erosion of resources and their supporting environments
- Paucity of action, lack of strategic alignment, & management frustration
- Active champions, little resourcing

- Partnership
- Wananga - Contextualise 'ourselves' in our world view
- Understand what we want to achieve – define our goals
- Bring our experts & other expert knowledge together
- Undertake research & information to make informed fisheries management decisions
- Develop trust, discussion, understanding, action
- Develop processes, monitoring & recording
- Implement strategies = Empowerment
- Knowledge is the currency of our future



- 
- Dr Charles Royal
 - Develop 'picture' of existing rohe moana mātauranga
 - Identify our goals
 - We have intimate intergenerational knowledge of what happens where and when
 - Knowledge 'stock-take' of past and present management – tikanga, habitats, taonga species and practices – i.e., harvest methods, effort, abundance, size, condition or health



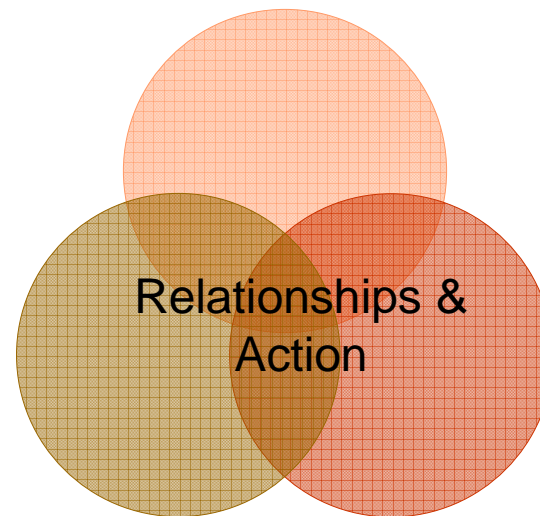
- Dr Gail Tipa
- ‘Contextualise ourselves in our worldview’
- Develop our values ‘benchmark’ with selected ecosystem & fisheries measures of health
- Consistently evaluate health – Cultural Marine Health Index
- Statistically rigorous, robust analysis



- Collate available local & broader, spatial and temporal biological, ecological & fisheries management information to support our goals
- Identify & collect information to fill gaps, develop time series
- Standardise data collection & analyse
- Determine relationship between our 'benchmarks' & 'mainstream' ecosystem & fisheries measures of health
- Implement management strategies



Local knowledge



Key information gaps

Broad scale temporal & spatial knowledge



- Opportunity to collect knowledge
- Opportunity to set realistic management goals based on best information
- Develop robust monitoring & standardised recording frameworks
- Develop a framework for information sharing across management processes (i.e., local scale Mātaitai Reserve level or stock assessment QMA level)
- Develop a process to facilitate effective input & participation into fisheries management processes



