

# National Climate Centre

guiding responses to global change

helping people prepare for and deal with the climate – now and in the future

- climate measurement and monitoring
- climate data and summaries
- climate maps and GIS layers
- climate forecasts and seasonal outlooks
- influences on climate, including El Niño–La Niña, sea surface temperatures
- future climate changes
- effects of climate – present and future
- climate-related hazards

[www.niwasience.co.nz/ncc](http://www.niwasience.co.nz/ncc)

## Helping people plan for climate change

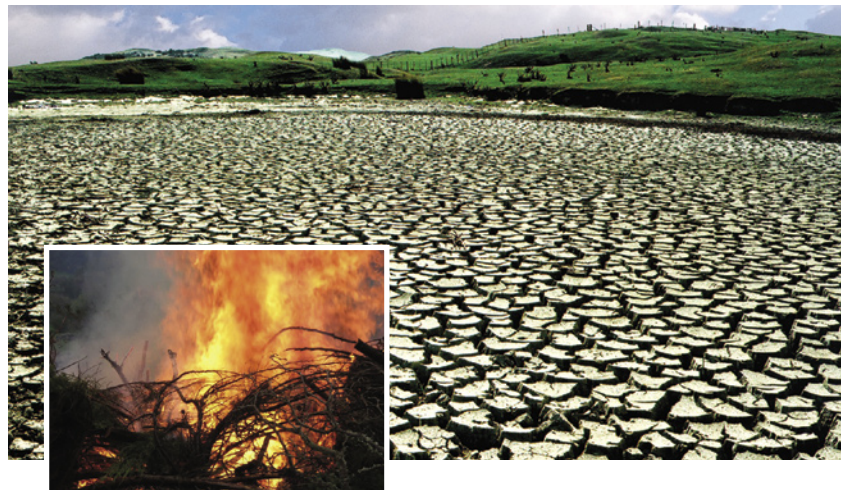
The global climate is changing. How will it affect people and places in New Zealand?

The National Climate Centre is focused on providing robust projections in sufficient detail so regional councils, farmers, utility companies, and other climate-sensitive industries can best plan for the future.

This year we released major studies into the likely effect of climate change on the risks of drought and (with Scion) rural fires. Both present ‘scenarios’ spanning the plausible range of likely changes, depending on future greenhouse gas emissions, and using results from validated climate models.

Severe drought (defined as the current 1-in-20 year drought) could increase markedly in already drought-prone eastern regions by the 2080s. Similarly, the frequency of very high and extreme forest fire danger is likely to increase, particularly in Bay of Plenty, the Wellington–Nelson region, and in the east of both islands. In both cases we have produced detailed maps, so people can pinpoint the likely effects where they live, farm, or operate.

The drought report was produced for the Ministry for the Environment and the Ministry of Agriculture and Forestry. The rural fire report was produced for the Fire Service Commission.



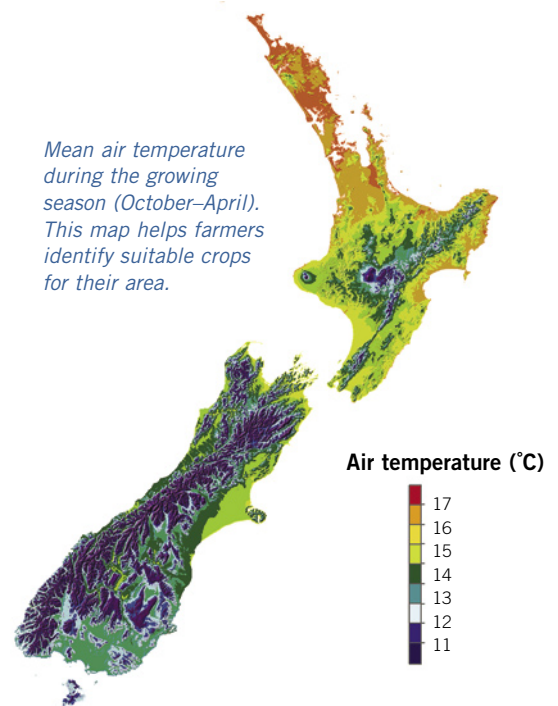
## You name it, we’ve mapped it

The National Climate Centre provides climate maps in GIS data layers to government departments, local and regional authorities, crown research institutes, universities, reinsurance companies, energy and transport companies, agricultural businesses, consultants, growers’ associations, land developers, and interested individuals.

Since we launched our climate mapping service ([www.niwasience.co.nz/ncc/mapping](http://www.niwasience.co.nz/ncc/mapping)) in August 2003, we have built up a base of nearly 100 users.

The uses for our maps and data are as varied as our customers. They include assessing crop potential or wind energy potential, identifying the frequency and severity of climate hazards, modelling pest dispersion and habitation, analysing tolerance limits for roading and construction materials, defining industrial standards, providing evidence for legal proceedings, and producing tourism information.

Mean air temperature during the growing season (October–April). This map helps farmers identify suitable crops for their area.



great services